

# Brentwood Sire Directory



## Top left to right:

BW Berretta Rose, E-93% 3-3 365 32,650 3.8% 1,239 3.8% 1,240 Dam of BW Parade-ET • BW Champs F203, E-96% 4-11 365 30,170 6.5% 1,951 4.1% 1,237 Dam of BW Highmark and the 1995 National Grand Champion • BW Centurion Peggy K798, E-92% 3-7 305 25,500 5.2% 1,327 3.3% 633 95DCR Dam of BW Primer and BW Triumphant-ET. Ranks among the Top 1 1/2% of the breed for JPI at +183. • BW Avery Suzanne ET119-ET, E-90% 2-11 305 24,100 5.0% 1,195 3.3% 797 95DCR Dam of BW Frontline-ET and BW Magician-ET and a full sister to "Country."

## Center left to right:

BW Berretta Prize G525, E-92% 3-1 305 25,570 4.0% 1,014 3.7% 936 DHIR Dam of BW Country-ET • BW Avery Katie ET121-ET, E-93% 4-2 365 35,570 4.0% 1,408 3.2% 1,147 DHIR Dam of BW Award, BW Aron-ET, BW Carrier-ET and BW Warriik. She is a full sister to "Country" and ranks 74<sup>th</sup> in the Nation for JPI at +239.

## Bottom left to right:

BW DC H879, E-93% 6-2 305 23,720 4.3% 1,016 3.2% 748 92DCR Dam of BW Finalist • BW Centurion Enid K783, E-92% 4-6 305 31,280 4.7% 1,474 3.4% 1,054 92DCR Dam of BW Sendoff-ET, BW Marshal and BW Centaur • BW Centurion Iris K347, E-94% 4-10 305 30,740 4.8% 1,489 3.3% 1,021 94DCR Dam of BW Rocket Man-ET. Ranks among the Top 1 1/2% of the breed for JPI at +167

## Bull Mothers





# Parade

## BW Parade-ET 7JE472

ALF x BERRETTA

3<sup>rd</sup> FOR RUMP WIDTH +1.3

6<sup>th</sup> FOR DAIRY FORM +1.8

7<sup>th</sup> FOR REAR UDDER WIDTH +1.9

USDA PTA 8/06: +803M +30F, +39P,

+5299CM, +\$267NM, +\$214FM

Type +1.5 JPI +151



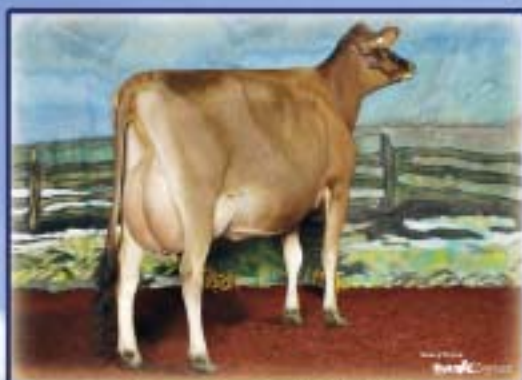
### BW Parade Corine D27, E-91%

1-11 305 24,730 4.3% 1,084 3.3% 821 96DCR

3-0 305 27,930 4.6% 1,293 3.4% 956 95DCR

4-2 365 40,392 4.8% 1,965 3.5% 1,406 92DCR

Ranks among the Top 1 1/2% of the breed for JPI at +212



### Lencrest Parading Belle-ET, VG 87 CAN

2-2 305 17,983 4.4% 789 3.8% 683 CAN

The #3 LPI cow in Canada

Owned by Gary and Maureen Bowers

My old favorite, BW Parade, is hitting a fair few home runs at the moment with more and more farms telling us how good they are to work with. A couple of the higher-end commercial farmers have even gone as far as to say that he is the best bull that they have used since "Lester." With over 100 daughters milking in Australia he is the #4 available sire for kg of protein.

- Peter Rough, World Wide Sires Australia

"Parade" is gaining in popularity all the time. He is the highest ranking bull among his peers of his initial release and more importantly the customer satisfaction grows each and every day. He has that unique ability to sire dairy strength and make competitive cattle in today's large herd environments. He reminds me in ways of Centurion . . . more satisfactory results the longer he's been available."

- Jeff Ziegler, Manager of Protein and Specialty Breed Programs for Select Sires

# Legion

## BW Legion 7JE696

CENTURION X BROOK

1<sup>st</sup> FOR FORE UDDER ATTACHMENT AT +3.0

3<sup>rd</sup> FOR TYPE AT +2.2

4<sup>th</sup> FOR TEAT PLACEMENT AT C2.0

7<sup>th</sup> FOR UDDER DEPTH AT S1.9

USDA PTA 8/06: +294M +39F, +12P,

+5263CM, +\$256NM, +\$245FM JPI +122



### BW Legion Linda D620, E-90%

2-0 365 20,360 4.5% 945 3.2% 870 94DCR

Grand Champion, 2006 California State Fair

Reserve Grand Champion, 2006 Oregon State Fair

1st Sr. 3-year-old, 2006 Tillamook Spring Show



### Legion Jasmine, E-90%

21,943—983—757 ME at 2-1

High seller of the 2006 Kentucky National Sale

Bred by Cedarcrest Farms, owned by Charles Arlen

"Just a note to let you know how well the BW Legion daughters are doing here at Ahlem Farms. We are pleasantly surprised how well they are milking. Some of the first ones have a 305 ME of over 25,000 lbs milk. Their type is where we expected it — Good!"

- Ed Fisher, Ahlem Farms

"Legion" is going down in history as one of the breed's best udder improvers of all time. He can change udder attachments both fore and rear in one generation as quick as any bull I've seen. Yes he can make the colored shavings type, but also take that ultra milk cow and fix the udder quickly while adding components and longevity. He is the best combination of both of his parents."

- Jeff Ziegler, Manager of Protein and Specialty Breed Programs for Select Sires



# Award

7JE712

## BW Award

CENTURION X AVERY

USDA PTA 8/06: +169M +13F, +11P,  
+5231CM, +5218NM, +\$179FM  
Type +1.9 JPI +197



### BW Award Ann L291, VG-88%

2-0 305 22,067 5.3% 1,174 3.8% 830

Ranks among the Top 1% of the breed for JPI at +166



### BW Award Krista L452

Proj. to 21,180—1,049—720 ME at 1-10



"After seeing the daughters of the "Award" bull at Brentwood and Cedarcrest Farms we are convinced that he is indeed a great udder bull, both fore and rear. They also have the depth of rib and front end strength that many modern bulls are lacking. One of the most exciting young cows here is a maternal sister to "Award." This is a cow family that we plan to develop further."

- Eric Silva, Sunset Canyon Jerseys

# Country

200JE989

## BW Country-ET

AVERY X BERRETTA

6<sup>th</sup> FOR PRODUCTIVE LIFE AT +3.4

7<sup>th</sup> FOR UDDER CLEFT +1.4

9<sup>th</sup> FOR REAR UDDER HEIGHT AT +2.2

USDA PTA 8/06: +1,111M +35F, +26P,  
+\$317CM, +\$334NM, +\$360FM  
Type +1.7 JPI +162



### BW Country Lelia L142, E-90%

1-8 365 21,700 4.8% 1,062 3.6% 772 94DCR



### BW Country Uirica D432, E-90%

3-5 305 30,010 5.5% 1,636 3.7% 1,015  
Ranks among the Top 1% of the breed for JPI at +167



### BW Country Amber D445, VG-89%

2-11 365 32,930 4.4% 1,428 3.3% 1,107 93DCR

Ranks among the Top 1% of the breed for JPI at +183



### BW Country Monica K780, E-94%

3-7 305 22,000 4.8% 1,057 3.8% 844 90DCR

Ranks among the Top 1% of the breed for JPI at +160  
Owned by Philip Linehan



"I had the privilege and opportunity to view the herd at Brentwood last July and I have been particularly impressed by the group of BW Country milking daughters. They were from various ages, at different stages and in different lactations.

"Country" consistently transmits strength and width of body to his daughters, with broad muzzles, wide chests, and impressive openness of ribs to give them definite advantages in capacity of feed intake over their herd mates. Through my inspection, my attention was attracted by the wide rumps on those cows, and their wide and high rear udder attachments. "Country" daughters have silky texture to their mammary systems, with great support and ideal teat placement. In modern times where high competitiveness, profitability, and longevity are obviously breeders preoccupation, BW Country daughters match that trend perfectly with noticeable development into later lactations and producing high volumes of milk, with impressive total fat and protein."

- Patrice Simard, Colour Breed Specialist, Semex Alliance





**BW Finalist Shelise L347, VG-87%**  
 1-8 269 17,750 4.8% 847 3.4% 597 93DCR  
 22,015 — 1,022 — 741 ME

**BW Finalist Brandy L348, VG-88%**  
 1-10 305 24,010 4.9% 1,170 3.4% 808  
 Ranks among the Top 1% of the breed for JPI at +156  
 2<sup>nd</sup> Sr 2-year-old, 2006 California State Fair

# Finalist

**100JE7233**  
**BW Finalist**

**CENTURION X DUNCAN CHIEF**

USDA PTA 8/06: +726M +23F, +17P,  
 +5242CM, +\$254NM, +\$271FM  
 Type +1.6 JPI +122

## Brentwood Young Sires



**BW Marshal 11JE805** - PARADE x CENTURION END x AVERY KATIE  
 PA +1,138M, +42F, +39P, +\$329CM, +\$320NM, +\$305FM Type +1.9 JPI +181

**BW Carrier-ET 11JE806** - RUEBEN x AVERY KATIE x BERRETTA PRIZE  
 PA +1,674M, +32F, +40P, +\$266CM, +\$292NM, +\$329FM Type +1.5 JPI +165

**BW Primer 11JE839** - RUEBEN x CENTURION PEGGY x AVERY SUZANNE  
 PA +1,385M, +28F, +34P, +\$201CM, +\$221NM, +\$249FM Type +1.6 JPI +137

**BW Aron 11JEB77** - JACE x AVERY KATIE x BERRETTA PRIZE  
 PA +1,360M, +55F, +38P, +\$433CM, +\$441NM, +\$450FM Type +2.0 JPI +217

**BW Frontline-ET** - FUTURITY x AVERY SUZANNE x BERRETTA PRIZE  
 PA +1,026M, +40F, +31P, +\$305CM, +\$307NM, +\$307FM Type +1.8 JPI +171

**BW Kelvar-ET** - FUTURITY x MONTANA NICOLE x BERRETTA PRIZE  
 PA +1,351M, +54F, +42P, +\$299CM, +\$298NM, +\$292FM Type +1.9 JPI +186  
 Dam: BW Montana Nicole ET100-ET, E-90% former #1 JPI cow

**BW Rocket Man-ET** - ROCKET x CENTURION IRIS x E-90% DUNCAN CHIEF  
 PA +822M, +34F, +25P, +\$283CM, +\$285NM, +\$285FM Type +1.7 JPI +150

**BW Magician-ET** - MAXIMUS x AVERY SUZANNE x BERRETTA PRIZE  
 PA +712M, +72F, +34P, +\$452CM, +\$427NM, +\$383FM Type +1.3 JPI +211

**BW Warrick-ET 200JE17** - BOMBER x AVERY KATIE x BERRETTA PRIZE  
 PA +1,350M, +46F, +31P, +\$286CM, +\$310NM, +\$345FM Type +1.6 JPI +174

**BW Centaur** - PARADE x CENTURION END x AVERY KATIE  
 PA +1,138M, +42F, +39P, +\$329CM, +\$320NM, +\$305FM Type +1.9 JPI +181

**BW Triumphant-ET** - MAXIMUS x CENTURION PEGGY x AVERY SUZANNE  
 PA +560M, +72F, +31P, +\$406CM, +\$378NM, +\$329FM Type +1.6 JPI +196

**BW Goodwin 200JE23** - SULTAN x COUNCILLER NICOLE x E-92% BROOK  
 PA +105M, +25F, +4P, +\$114CM, +\$113NM, +\$111FM Type +1.6 JPI +72  
 Dam: BW Counciller Nicole K734, E-91% maternal sister to "Legion"

**BW Bombardier-ET 200JE18** - BOMBER x MONTANA NICOLE  
 PA +1,538M, +56F, +39P, +\$262CM, +\$280NM, +\$304FM Type +1.6 JPI +176  
 Dam: BW Montana Nicole ET100-ET, E-90% former #1 JPI cow

**BW Blaise-ET 100JE7227** - JACE x AVERY KATIE x BERRETTA PRIZE  
 PA +1,360M, +55F, +38P, +\$433CM, +\$441NM, +\$450FM Type +2.0 JPI +217



**BW Contender-ET 7JEB31** - SULTAN x E-90% MONTANA  
 PA +1,045M, +49F, +31P, +\$231CM, +\$233NM, +\$234FM Type +1.8 JPI +151  
 Dam: BW Montana Nicole ET100-ET, E-90% former #1 JPI cow

**BW Sendoff-ET** - BOMBER x CENTURION END x AVERY KATIE  
 PA +1,234M, +46F, +29P, +\$245CM, +\$264NM, +\$293FM Type +1.8 JPI +160

**BW Sirius-ET 7JEB41** - FUTURITY x MONTANA NICOLE x BERRETTA PRIZE  
 PA +1,351M, +54F, +42P, +\$299CM, +\$298NM, +\$292FM Type +1.9 JPI +186  
 Dam: BW Montana Nicole ET100-ET, E-90% former #1 JPI cow

**BW Makers Mark** - WHISKEY x COUNTRY JULIE x COUNCILLER DIANE  
 PA +642M, +56F, +26P, +\$364CM, +\$351NM, +\$329FM Type +1.1 JPI +162  
 Dam: BW Country Julie L88, VG-88% 2-3 305 25,360 5.2% 1,318 3.5% 884  
 Grandam: BW Counciller Diane K946, E-90% NCL for fat at 3-1 with 1,511F

"It is interesting to go back to see what we got from you. Seven out of eight go back to "Country's" family. Seven out of eight are from highly proven type sires ("Avery"/"Centurion") and two others are "Futurity" sons. I guess it's safe to say we like type from high production families! With bulls like these, we should be competitive with any other bull stud."

-Brian Gueff, Jerseyland Sire Analyst

Brentwood Farms is owned and operated by Bob and Pam Bignami. We currently milk about 1,800 Jersey cows. Brentwood has been at this location since 1957. Our cattle are fed Total Mixed Rations once per day, and they are housed in free stall barns. The herd is currently "rolling" about 20,000 lbs (9,000 Liters.) per year per cow, actual production.

Our philosophy of breeding is to use sires from superior type cows and breed all the milk and components available. Having milked over 1,000 cows for more than 30 years, our cattle have selected themselves to be rugged, sound cattle that last. We invite you to visit the farm.

## Brentwood Farms

Bob, Pam, Wendy, Cheryl, Laurie and Alane Bignami  
 24540 Clark Ave., Orland, California 95963  
 530/865-5612 office 530/519-5612 mobile  
 bob@brentwoodfarms.com http://www.brentwoodfarms.com